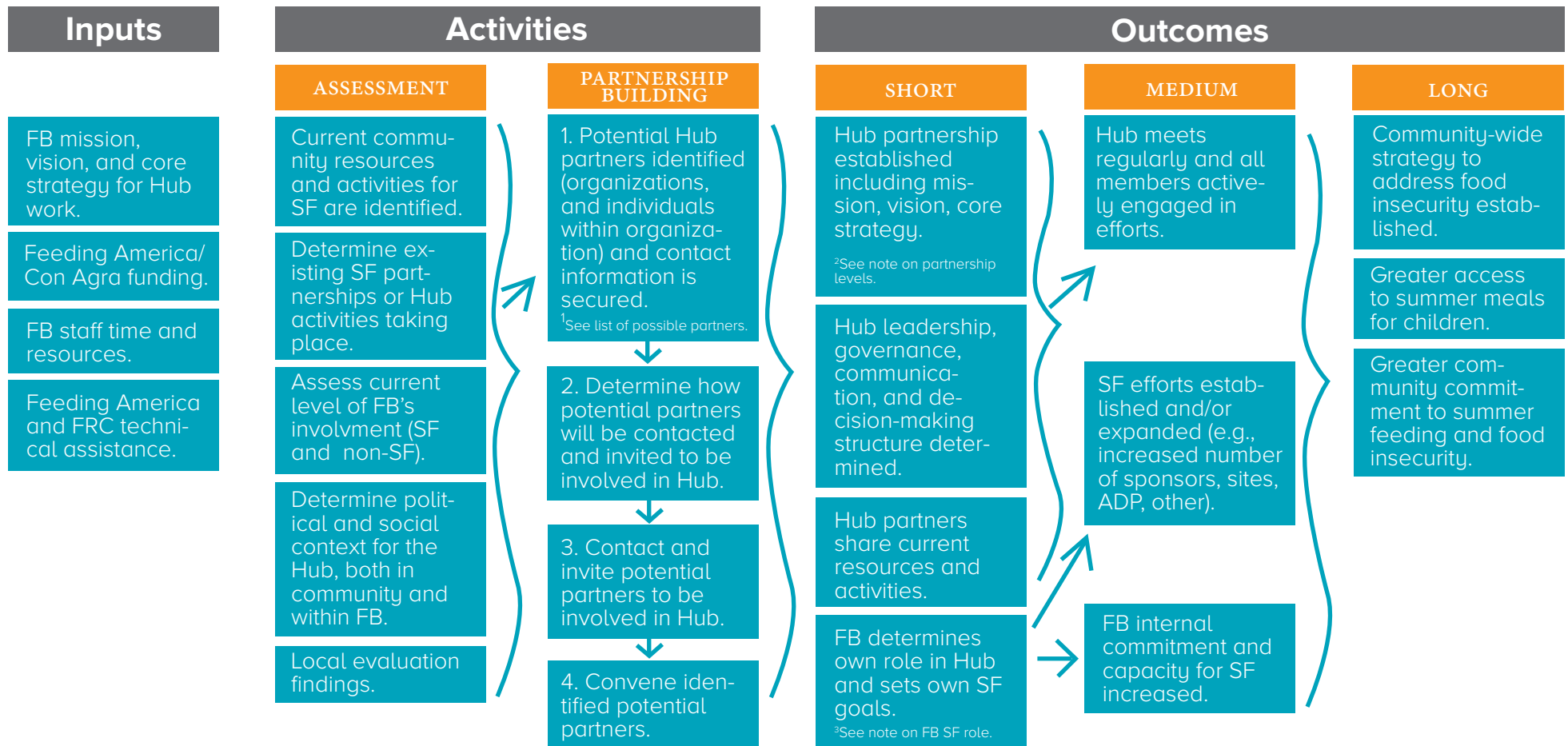


Hunger Free Summer Hub Logic Model

Situation: The need for food assistance during the summer remains high because of persistently high food insecurity and the lack of school-provided meals. Opportunities exist for collaboration among existing sponsors and other community organizations that serve children. Programs could be strengthened by convening organizations to share successes, challenges, and experiences with barriers to develop community-wide strategies that address food insecurity over the summer.



Hunger Free Summer Hub Cross-Site Evaluation

ASSUMPTIONS

- FB will play a role in formation of partnership hubs in three communities.
- Each community may vary where they are in the process at any given time.
- FB's own summer feeding efforts may take different forms.
- FB may or may not be the official Hub convener.

EXTERNAL FACTORS

- Willingness and interest of community organizations engaging in Hub work.
- SF administrative program rules, changes, administration, etc.
- Community characteristics (e.g., geography, rural).
- Political and social context for Hub.



FRC

FAMILY
RESILIENCY
CENTER

AT ILLINOIS

FB=Food Bank

SF=Summer Feeding

Hub=Summer Feeding Hub